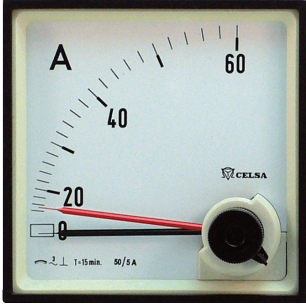


ANALOGUE MEASURING INSTRUMENTS

BIQ...n - Maximum demand indicators



- Class 3
- For connection to current transformers
- Secondary 5 A or 1 A
- With interchangeable scale

Description

The movement consists of a bimetallic spiral which is expanded by the heat caused by the current circulating in it, driving the pointer. A second spiral, mounted in opposition, compensates the effect of the ambient temperature. The ambient temperature which can oscillate from -10 °C up to +55 °C.

Due to its long response time, short interval current peaks are not registered and the instrument indicates by a black pointer the mean of the r.m.s. current in a specified period of time (15 minutes). The maximum indication is registered by the position of the red pointer, dragged by the black one. By means of a sealable knob it is possible to reset the red pointer to the position of the black one in order to make a new reading. The maximum demand meters are used to monitor lines in feeders, transformers and electrical installations in general.

Overload capacity according to DIN 43780

Continuously	1,2 times nominal value
Short duration	10 times nominal value

Saturating current transformers shall be used to protect the instruments against overloads exceeding this rating.

Scales

The full-scale value is 1.2 times I_n , (I_n is the rated primary current of the current transformer). 90° scale, quadratic. Coarse-fine division.

Technical Features

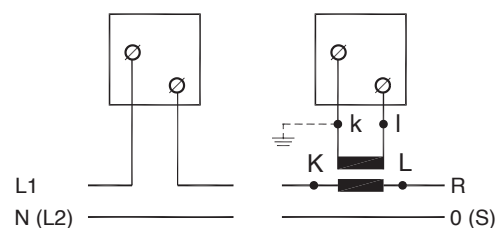
Type	BIQ72	BIQ96n
Front frame (mm)	72 x 72	96 x 96
Scale length (mm)	91	97
Consumption	.../5A .../1A	2,5 VA 1,6 VA
Setting time at transformer 15 min	.../5A .../1A	.../5A .../1A
Transformer primary current (A) = 100%	Final scale value (A) = 120% Primary rated current + 20% overload	
A	5 10 15 20 25 30 40 50 60 75 100 125 150 200 250 300 400 500 600 750 800 1,0 kA 1,2 kA 1,5 kA 2,0 kA 2,5 kA 3,0 kA 4,0 kA	6 12 18 24 30 36 48 60 72 90 120 150 180 240 300 360 480 600 720 900 960 1,2 kA 1,4 kA 1,8 kA 2,4 kA 3,0 kA 3,6 kA 4,8 kA
Terminal cover	●	●

Backside terminal cover for protection according to VGB 4
(Please indicate when ordering)

Connection diagrams BIQ

Direct connection

Connection via transformer



Dimensions in mm / Weight in gramme									
Type		a	c	d	e	g	h	Ø	Weight
BIQ72n	.../5 A	72	55	74	68 ^{+0,7}	8 ¹	4,6	M6	190
	.../1 A	72	55	74	68 ^{+0,7}	8 ¹	4,6	M4	190
BIQ96n	.../5 A	96	55	74	92 ^{+0,8}	8 ¹	5	M6	250
	.../1 A	96	55	74	92 ^{+0,8}	8 ¹	5	M8	250

